

10  $\mu$ m  
|-----|

Mag = 2.56 K X

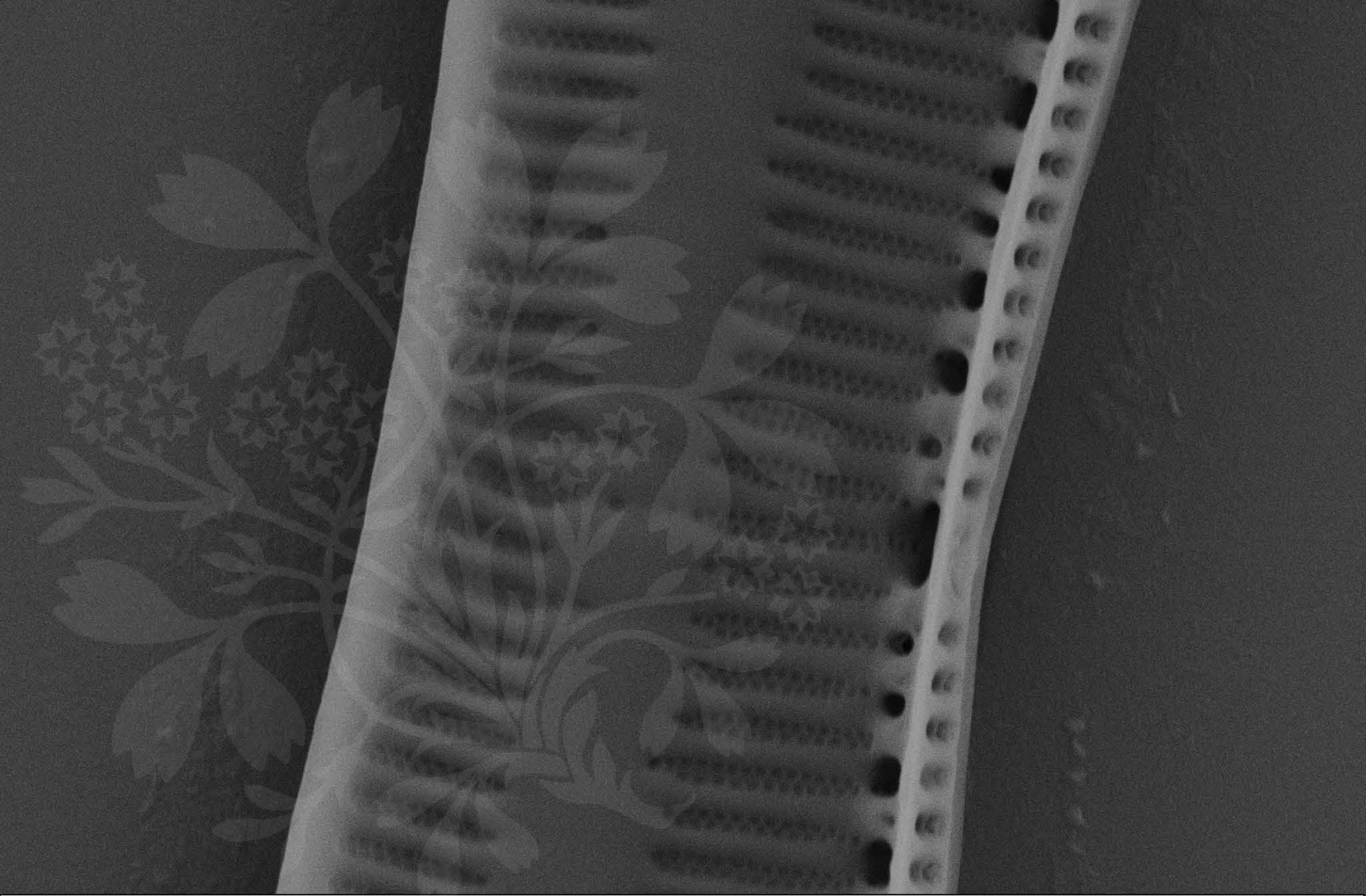
WD = 4 mm

EHT = 5.00 kV Signal A = SE2

File Name = 0107-DM986cat Ty hungarica.tif

Date :11 Aug 2011





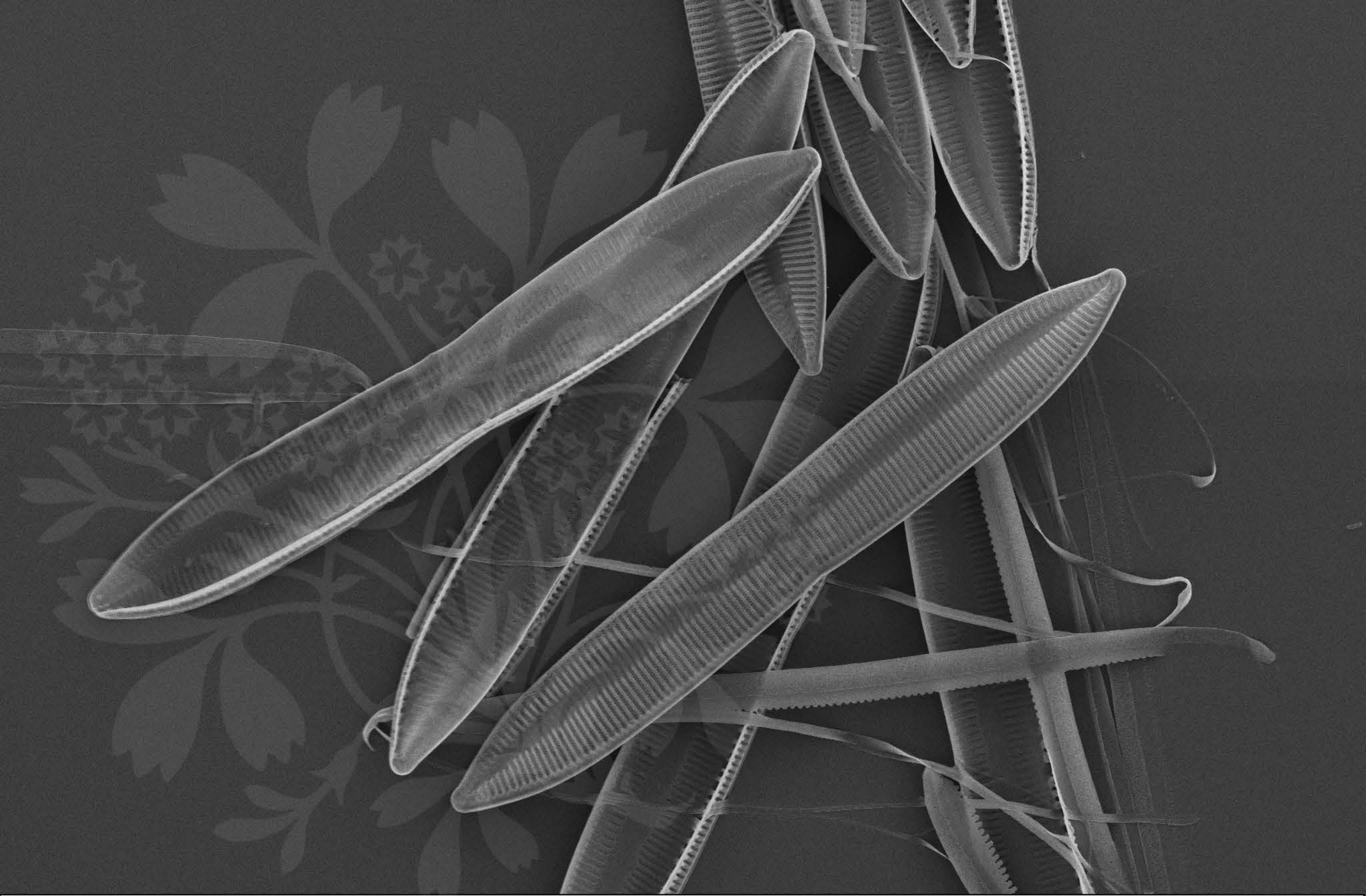
1  $\mu$ m  
|-----|

Mag = 19.89 K X  
WD = 4 mm

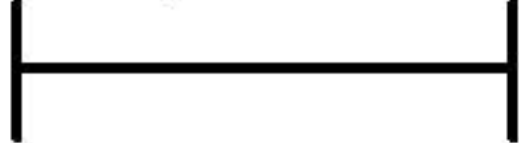
EHT = 5.00 kV Signal A = SE2  
File Name = 0108-DM986cat Ty hungarica.tif

Date :11 Aug 2011





10  $\mu$ m



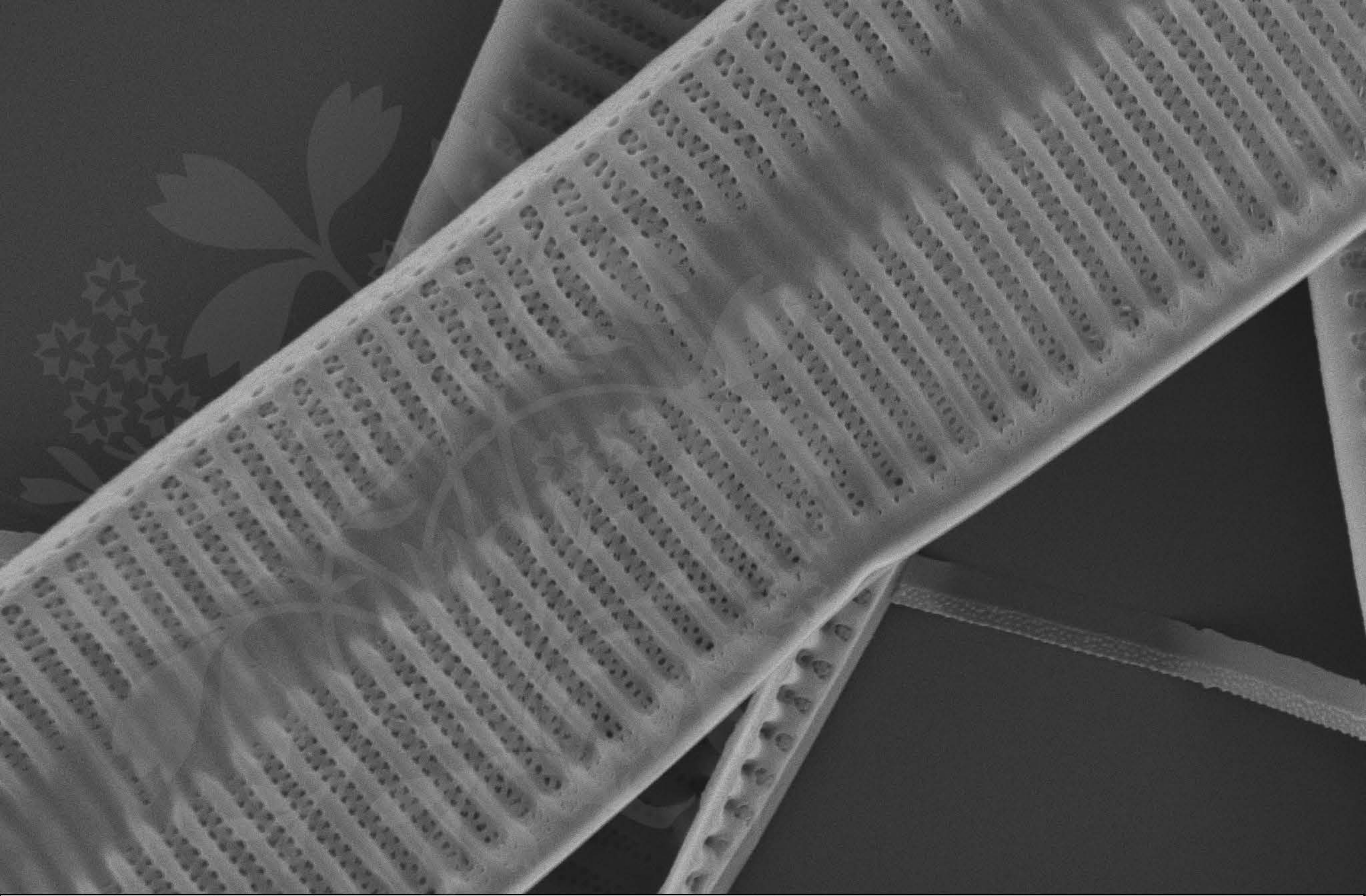
Mag = 3.26 K X

WD = 4 mm

EHT = 5.00 kV Signal A = InLens Date :11 Aug 2011

File Name = 0109-DM986cat Ty hungarica.tif





2  $\mu$ m  
|-----|

Mag = 17.37 K X

WD = 4 mm

EHT = 5.00 kV Signal A = InLens Date :11 Aug 2011

File Name = 0110-DM986cat Ty hungarica.tif





10  $\mu$ m

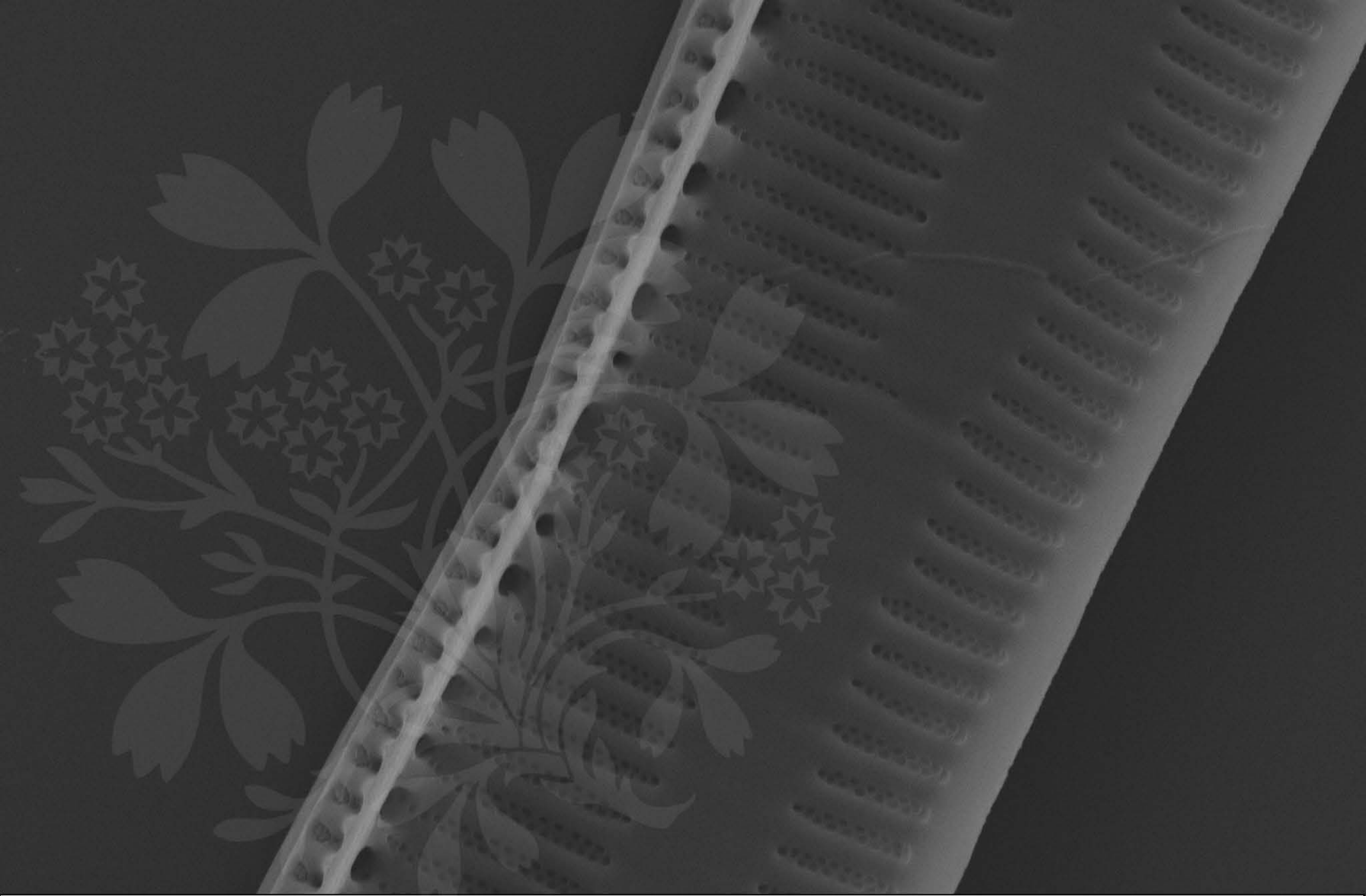
Mag = 2.31 K X

WD = 4 mm

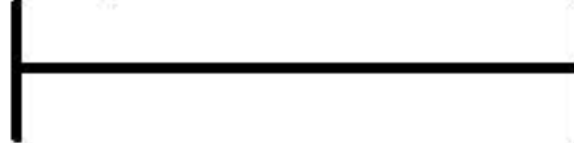
EHT = 5.00 kV Signal A = InLens Date :11 Aug 2011

File Name = 0111-DM986cat Ty hungarica.tif





2  $\mu$ m



Mag = 18.49 K X

WD = 4 mm

EHT = 5.00 kV Signal A = InLens Date :11 Aug 2011

File Name = 0112-DM986cat Ty hungarica.tif

